

# Process supervision and traceability smart controller

 **DPY**<sup>®</sup>Pilot





## PRODUCTIVE SOLUTIONS

As an industrial process expert, we help you meet your challenges.

Productivity, safety, quality, industry 4.0 are themes on which we can offer you our expertise and our solutions. Whether in the field of assembly technology, machining or welding, our dedicated and specialised teams accompany your progress and recommend solutions and equipment to reach performance levels in line with your industrial strategy.



### Certified quality

From design to commissioning, DOGA guarantees the quality of this equipments and services according to ISO 9001: 2015 certification.

## 5 reasons to trust us



### Expertise

Our field experts propose solutions adapted to your environment and specific needs.



### Innovation

By developing the products and services of tomorrow, we offer you new perspectives and prospects.



### Performance

Our high value-added solutions improve your performance and guarantee the quality of the final product.



### Commitment

Focusing of your objectives, we commit ourselves to helping you reach them.



### Reliability

Our organization, ISO 9001 certified since 1996, is the guarantee of your satisfaction.



As a world-class assembly technology player, we manufacture and market equipments and solutions for the assembly industry which contribute to the improvement of your manufacturing quality and productivity.

Our assembly, ergonomics and traceability solutions contribute to enhancing your productivity, controlling your process quality and meet the requirements of industry 4.0.

We offer products designed to last, and high value-added services, by relying on our team's know-how and expertise : design, production, installation, start-up, training and maintenance. We support you locally thanks to our worldwide presence through our subsidiaries and our specialized distribution network.



Contact us @ international@dogas.com ☎ +33 1 30 66 41 41

www.dogasassembly.com

# SUMMARY



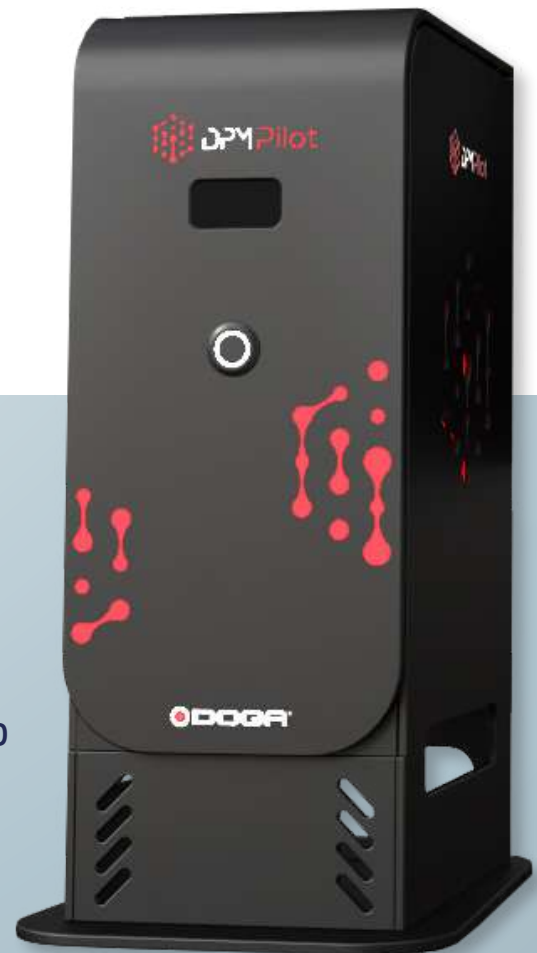
## DOGA PROCESS MANAGEMENT Pilot

### Process supervision and traceability smart controller

The new **DPM<sup>®</sup>Pilot** controller, designed and manufactured by DOGA, supports you in the deployment of Industry 4.0 in your manufacturing processes.

As a true conductor of your assembly station, **DPM<sup>®</sup>Pilot** manages the tools and accessories, guides the operator, and ensures traceability of results.

**DPM<sup>®</sup>Pilot** can manage a variety of your operations and allows you to increase operator versatility while reducing training time.



- ▶ **4** AN INNOVATIVE SOLUTION WITH UNIQUE BENEFITS
- ▶ **5** FEATURES
- ▶ **5** FREE CHOICE OF TIGHTENING TOOL BRAND
- ▶ **6** POWERFUL AND INTUITIVE INTERFACE
- ▶ **7** TECHNICAL CHARACTERISTICS
- ▶ **8** AVAILABLE VERSIONS
- ▶ **9** VERSIONS CONTENT
- ▶ **10** OPTIONAL EQUIPMENT

## AN INNOVATIVE SOLUTION WITH UNIQUE BENEFITS

Workstation-oriented design  
meets requirements of your industrial  
assembly processes

### ✓ **Security: integrated and autonomous system**

**DPM®Pilot** controls workstation equipment autonomously through local connections.

- No risk of production downtime due to network or server issues
- Process management information are integrated and always available

### ✓ **Versatility: compatibility with tightening tools available on the market**

**DPM®Pilot** has been designed to communicate with a variety of brands.

- DOGA
- STANLEY®
- Tohnichi
- Open protocol tools
- etc.

### ✓ **Ergonomics: easy and intuitive use**

Thanks to **DPM®Pilot**'s user-friendly interface, configuring your assembly sequences does not require a computer or automation skills.

**DPM®Pilot** takes care of the entire process, guides operators, decreases their training time and increases their versatility.

### ✓ **Traceability: protected data**

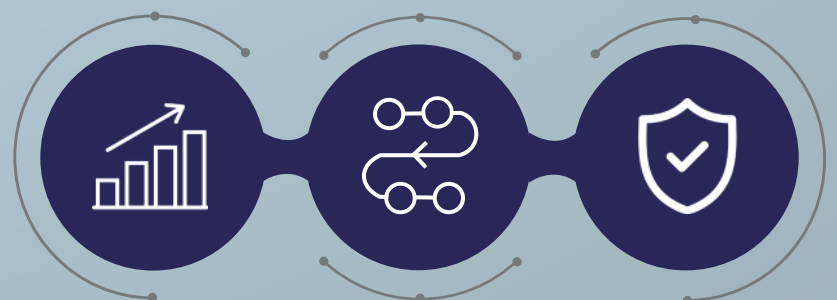
**DPM®Pilot** saves results locally or remotely.

- Recording of all process datas
- Creation of production reports





INCREASE YOUR  
PRODUCTIVITY

CONTROL  
YOUR PROCESSES

ZERO DEFECT  
ASSEMBLY



# FEATURES

<h3>Error proofing</h3> <ul style="list-style-type: none"> <li>Compliance with predefined operating instructions</li> <li>Using the right tool at the right time with right settings</li> </ul> 	<h3>Operator guidance</h3> <ul style="list-style-type: none"> <li>Improved efficiency</li> <li>Reduction of training time</li> <li>Maximizing versatility</li> </ul> 	<h3>Multi-protocol</h3> <ul style="list-style-type: none"> <li>Compatible with various tightening tools</li> <li>Communication with equipment of the production line</li> </ul> 	<h3>Traceability</h3> <ul style="list-style-type: none"> <li>Recording of all process data</li> <li>Creation of production reports</li> </ul> 
---	--	--	---

## FREE CHOICE OF TIGHTENING TOOL BRAND

### TORQUE REACTION ARM

Compatible with all DOGA torque reaction arms equipped with position encoders.





### ACCESSORIES

Barcode scanner, printer, etc.





### INDUSTRIAL EQUIPMENT

Bit tray, socket tray, pick to light sensors, camera, PLC, etc.



### TIGHTENING TOOLS

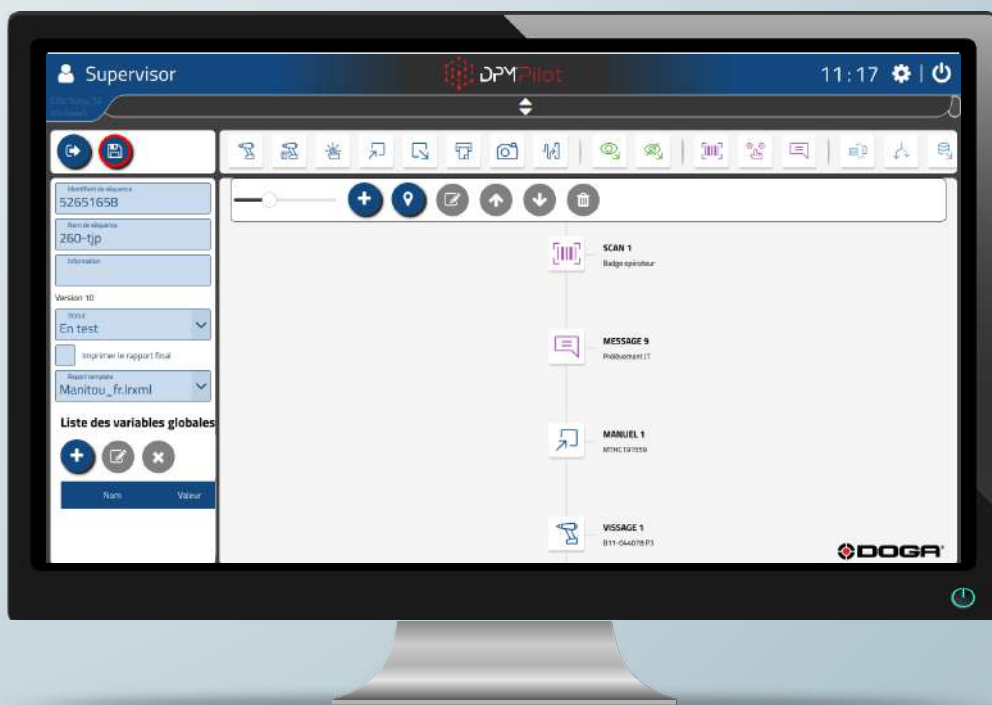
Compatible with tightening tools from a wide number of brands.

<p>DOGA</p> 	<p>STANLEY®</p> 	<p>TOHNICHI</p> 	<p>ATLAS COPCO</p> 	<p>DESOUTTER</p> 
---	---	---	---	--

# POWERFUL AND INTUITIVE INTERFACE

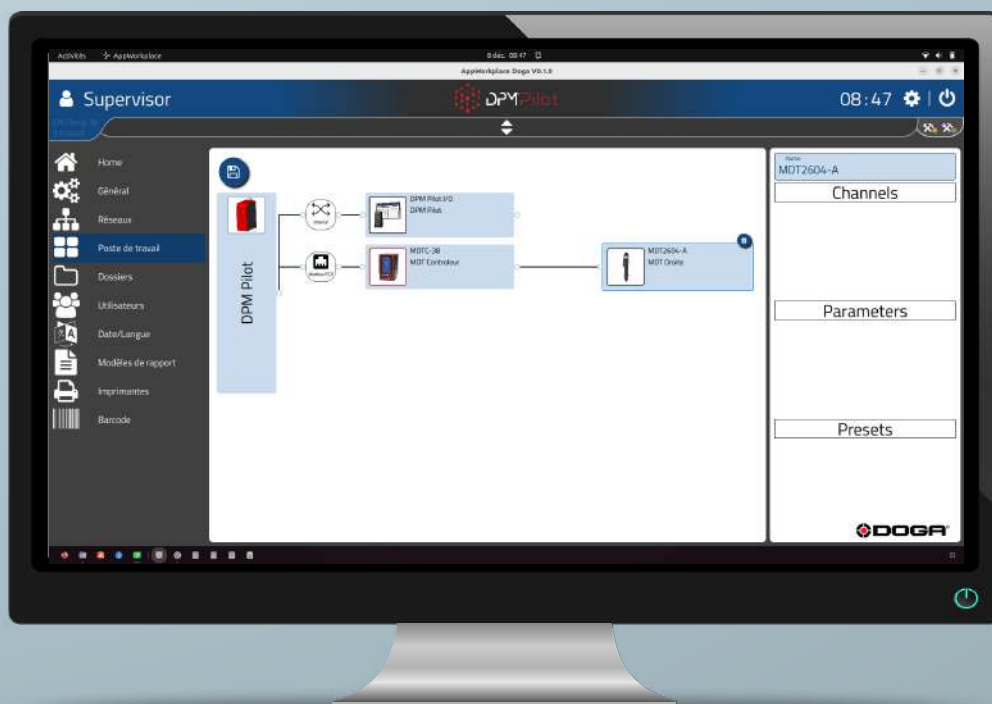
## USER-FRIENDLY AND INTUITIVE SEQUENCE EDITOR

- Graphical navigation: each icon represents a function
- Clear and comprehensive sequencing programming
  - No coding skills are required



## EASY AND ERGONOMIC CONFIGURATION

- Auto-selection of connection parameters for each tool
- Customizable tool designations for easier identification





## OPERATOR GUIDANCE

- Visual instructions
- Error proofing



## RESULTS

- Recording of all process data
- Local or remote storage



## DPM<sup>®</sup>Pilot TECHNICAL CHARACTERISTICS

- ▶ Operating system: embedded Linux (Linux Kernel 5.2)
- ▶ x 4 inputs and x 4 integrated 24 V digital outputs
- ▶ x 2 separate networks:
  - x 1 WAN network port for external network connection
  - x 4 LAN network ports for connecting tools and accessories
- ▶ Suitable with high-definition or standard touch screens with HDMI connection
- ▶ Storage capacity available for the application: 128 GB (for sequences between 3.5 and 5 MB and 150 KB results files)
  - Storage example 1: 50 sequences and 850,000 results
  - Storage example 2: 1,000 sequences and 820,000 results
- ▶ x 2 USB ports (expandable with external USB switch) for printer, barcode scanner, badge reader, etc.
- ▶ Up to 20 connected tightening tools
- ▶ x 8-inputs, x 8-outputs extension with the add-on **DPM I/O Module** (up to 2 add-on module)
- ▶ Up to 2 connected analog position control Digilink modules

# AVAILABLE VERSIONS

**3 versions available**

Select your version according to your needs.

	 DPM Pilot Standard	 DPM Pilot Advanced	 DPM Pilot Expert
 Sequences editor	✓	✓	✓
 Start sequence and serial number backup by barcode scanning	✓	✓	✓
 Information input with keyboard (touch or remote)	✓	✓	✓
 Execution and control of assembly sequences	✓	✓	✓
 Operator guiding instructions with image/video/PDF	✓	✓	✓
 Internal storage of results	✓	✓	✓
 User management	✓	✓	✓
 Digital Inputs and Outputs	✓	✓	✓
 Printing labels during sequence	✓	✓	✓
 Maintenance menu	✓	✓	✓
 Storage of results on your network	✓	✓	✓
 Absolute position control		✓	✓
 Analog inputs		✓	✓
 Image capture to be included in the result report			✓
 Communication on field networks (Modbus)			✓
 Link to your process databases			✓
 Connection to other interfaces (retrieving results)			✓



# VERSIONS CONTENT

## DPM<sup>®</sup>Pilot Standard



- ▶ DPM<sup>®</sup>Pilot Interface
- ▶ Support foot
- ▶ 4-port USB hub
- ▶ Power cable
- ▶ x 2 rear mounting systems

Model	Code (EU)	Code (US)	Code (UK)
DPM <sup>®</sup> Pilot Standard	P200011	P200021	P200031

## DPM<sup>®</sup>Pilot Advanced



- ▶ DPM<sup>®</sup>Pilot Interface
- ▶ DigiLink module for position control management
- ▶ DigiLink external power supply
- ▶ Support foot
- ▶ 4-port USB hub
- ▶ Power cable
- ▶ x 2 rear mounting systems

Model	Code (EU)	Code (US)	Code (UK)
DPM <sup>®</sup> Pilot Advanced	P200012	P200022	P200032

## DPM<sup>®</sup>Pilot Expert



- ▶ DPM<sup>®</sup>Pilot Interface
- ▶ DigiLink module for position control management
- ▶ DigiLink external power supply
- ▶ Support foot
- ▶ 4-port USB hub
- ▶ Power cable
- ▶ x 2 rear mounting systems

Model	Code (EU)	Code (US)	Code (UK)
DPM <sup>®</sup> Pilot Expert	P200013	P200023	P200033

# OPTIONAL EQUIPMENT

## DigiLink

This module manages position control and analog inputs. It works with torque reaction arms equipped with position encoders.

- ▶ x 4 analog 0-10 V inputs
- ▶ x 2 inputs and 2 outputs digitals 24 V
- ▶ External 24 V DC power supply
- ▶ Modbus TCP communication with **DPM®Pilot** interface



Model	Code (EU)	Code (US)	Code (UK)
DigiLink	P200014	P200024	P200034

## DPM I/O Module

**DPM®I/O Module** expands the number of additional inputs and outputs.

- ▶ x 8 inputs and x 8 outputs 24 V digital
- ▶ 220V AC power supply
- ▶ Built-in 24 V DC power supply
- ▶ Modbus TCP communication with **DPM®Pilot** interface



Model	Code (EU)	Code (US)	Code (UK)
DPM®I/O Module	P200015	P200025	P200035







## DPM Wiring Module

**DPM®Wiring Module** simplifies connection to inputs and outputs of the **DPM®Pilot** interface.

Model	Code
DPM®Wiring Module	P200006



## Other optional equipment

Model	Code	
DPM®Pilot support foot	P200007	
4-port USB hub	P200041	
HDMI cable - 2 meters	P200043	
Wireless AZERTY keyboard with pad	P200042	
19-inch industrial HD touch screen	P200045	
19-inch industrial HD screen	P200044	



### YOUR NEEDS HAVE CHANGED?



#### Upgrade to a higher version

If you'd like to upgrade to a higher version of your **DPM®Pilot** interface, you can order a software extension without changing your interface.

Model	Code
DPM®Pilot Standard software extension to DPM®Pilot Advanced	P200094
DPM®Pilot Standard software extension to DPM®Pilot Expert	P200095
DPM®Pilot Advanced software extension to DPM®Pilot Expert	P200096



DigiLink  
Module  
needed



FOR MORE INFORMATION VISIT OUR WEBSITE



**DOGA**® | ASSEMBLY TECHNOLOGY

📧 international@doga.fr

☎ +33 1 30 66 41 41

📍 8, avenue Gutenberg - CS 50510  
78317 Maurepas Cedex - FRANCE

© DOGA | DOC.60140.03/24

We constantly strive to improve our products. As a result, the dimensions and indications in this document may not always correspond to the latest production. By explicit agreement, our sales are subject to a reservation of title (the provisions of the French 05/12/1980 Act are therefore fully applicable).

[www.dogasassembly.com](http://www.dogasassembly.com)